

# PRESS RELEASE



GALERIE ART CRU BERLIN · ORANIENBURGER STRASSE 27 · 10117 BERLIN-MITTE  
WWW.ART-CRU.DE · FACEBOOK.COM/GALERIEARTCRUBERLIN

030 / 24 35 73 14  
GALERIE@ART-CRU.DE

## CHAMELEONIC

### Peter Pankow, Betty Feix, Christo Lufundiso Luanza, Melanie Edwards

#### Jubilee Exhibition - 10 Years Galerie ART CRU Berlin

**Vernissage:** Thu. 13.09.2018, 5 pm  
**Exhibition:** 14.09. – 27.10.2018  
**Opening Hours:** Tue–Saturday, 12–6 pm  
**Location:** Galerie ART CRU Berlin, Oranienburger Str. 27, 10117 Berlin-Mitte, Germany  
**Greetings:** Alexandra von Gersdorff-Bultmann  
Director Galerie ART CRU Berlin  
Resident Manger and Project Coordinator in the department for people with mental disabilities  
**Music:** Ensemble NIDO  
Musicians Yehudi Menuhin Stiftung, Live Music Now und Live Jazz

For their 10-year jubilee **Galerie ART CRU Berlin** is showing works by Peter Pankow, Betty Feix, Christo Lufundiso Luanza and Melanie Edwards

**Peter Pankow** (\*1968) works at Thikwa Werkstatt für Theater und Kunst. His style has an imposing effect at first glance due to the palette and format he employs. Upon closer inspection one recognizes the interaction of figurative elements and exquisitely layered narratives. His works are layered pastels, etched out by needles and re-exposed as associative sediments. They are painstaking notes on the various permutations of his ego: super-ego, under-ego, old-ego and new-ego. Peter Pankow's works been exhibited in numerous exhibitions. He was awarded with the Lothar-Späth-Förderpreis and the European Art Award/EUCREA. In 2014 he was nominated for the euward 7.

**Betty Feix'** art is created in books or on canvases and is based on her dreams: of weddings, holidays in the South; or obscure meetings between various characters - often with Feix herself painted or written into the centre of the scene. The works on canvas are almost always characterized by a bright blue background against which the artist places her protagonists. A world full of rousing dynamics, full of vibrant colors, joy and wealth emerges especially through the joint effect of imaginary and narrative. The clear and vibrantly composed images carry the viewer along with their optimistic charm. Betty Feix is working in an artist group of Blumenfisch gGmbH. Her works have been shown at the Outsider Art Fair Paris 2014, Art Karlsruhe 2016 et al.

**Christo Lufundiso Luanza's** cut out figures, drawings and paintings are produced at the art workshop imPerfekt, a project initiated by Berliner Werkstätten für Menschen mit Behinderung GmbH. His "gender- and ageless line-figures have been transferred into three-dimensionality" (Der Tagessiegel 2014, Michael Nungesser) by the artist. The gallery recently presented his pieces at POSITIONS Art Fair Berlin during BERLIN ART WEEK and at art KARLSRUHE.

---

#### Trägerverein:

PS-Art e.V. Berlin  
Oranienburger Str. 27  
10117 Berlin

#### Vorstand:

Carolyn Rosner, Ralph Stabbert,  
Wolfram Voigtländer,  
Alexandra von Gersdorff-Bultmann

#### Spendenkonto:

Bank für Sozialwirtschaft  
BIC: BFSWDE33BER  
IBAN:DE42100205000001082600

# PRESS RELEASE



**Melanie Edwards** (born 1982 St. Antonio, Texas, USA) works with a big range of materials such as colored pencils, felt-tips, ballpoint pens, ink and markers as well as metals and collage technique. On pictures, titled “Gentle Coils in Gray” or “Aurorawindow”, turbulent and imprecated inner worlds are coming into being. The artist works at the day center “Leolo” of prenzlkomm gGmbH.

**Galerie ART CRU Berlin** is Berlin’s only gallery for so-called Outsider Art since 2008. The term (introduced in 1945 by painter Jean Dubuffet as “Art Brut”) refers to art by people with psychiatric disorders or mental disabilities. We are convinced that the particular perceptions these artists have allow them to create art of high authenticity. With our exhibitions we present works by “outsiders” as a crucial part of contemporary art and aim to foster discourse within the established art world. Being located at the Kunsthof on Oranienburger Straße, the gallery presents works by people with disabilities right in the centre of Berlin’s art scene. Galerie ART CRU Berlin is backed by the non-profit federation **PS-Art e.V. Berlin** – a network of different institutions.

For its five-year jubilee the gallery published a chronicle comprising all exhibition catalogues from 2008-13. In 2014 we took part at the **Outsider Art Fair** in Paris, the world’s leading fair in this field. The same year saw the nomination of five artists from the network of PS-Art e.V. Berlin for the international art prize **euward**. Since 2015 the gallery is a member of the **lvbg**, the Galleries Association of Berlin (Landesverband Berliner Galerien).

## For further information and images please contact us:

Contact: Alexandra von Gersdorff-Bultmann (gallery director)  
Matthias Hofmann (press)  
Phone: + 49 / (0)30 24 35 73 14 // + 49 / (0)172 3833728  
Mail: [galerie@art-cru.de](mailto:galerie@art-cru.de)  
Web: [www.art-cru.de](http://www.art-cru.de)  
Fb: [facebook.com/GalerieARTCRUBerlin](https://www.facebook.com/GalerieARTCRUBerlin)  
Hours: Tuesday till Saturday / 12 – 6 pm



---

### Trägerverein:

PS-Art e.V. Berlin  
Oranienburger Str. 27  
10117 Berlin

### Vorstand:

Carolin Rosner, Ralph Stabbert,  
Wolfram Voigtländer,  
Alexandra von Gersdorff-Bultmann

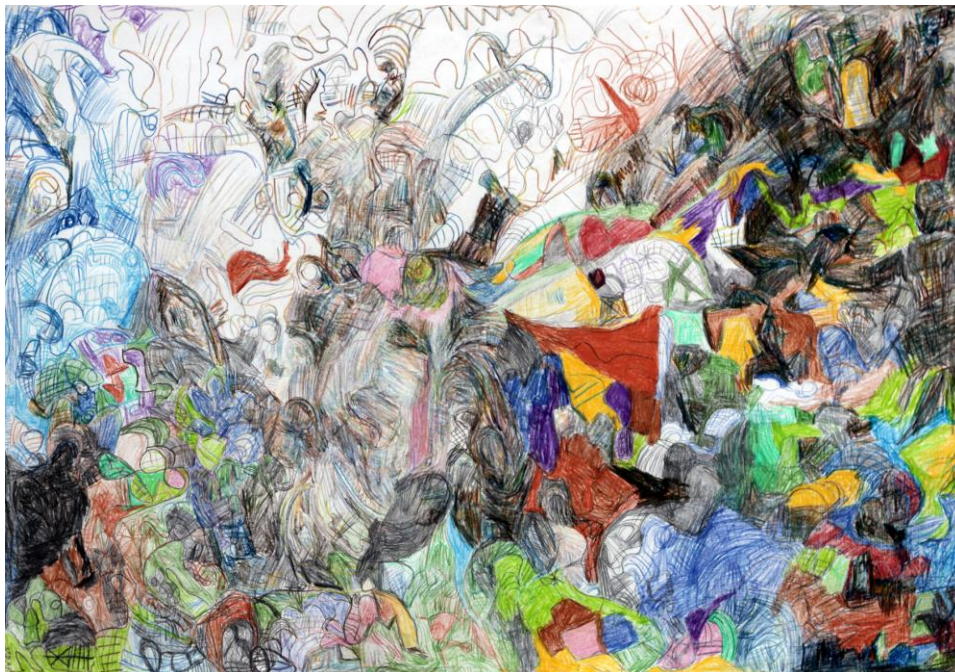
### Spendenkonto:

Bank für Sozialwirtschaft  
BIC: BFSWDE33BER  
IBAN:DE4210020500001082600

# PRESS RELEASE



For printable image material please contact: [galerie@art-cru.de](mailto:galerie@art-cru.de)



Peter Pankow, Bunter Regenwald der langsam abgeholzt wird, 2014, Colored pencil on Paper, 44x63



Betty Feix, Konzert, 2018, acrylic on canvas, 100x100

---

## Trägerverein:

PS-Art e.V. Berlin  
Oranienburger Str. 27  
10117 Berlin

## Vorstand:

Carolyn Rosner, Ralph Stabbert,  
Wolfram Voigtländer,  
Alexandra von Gersdorff-Bultmann

## Spendenkonto:

Bank für Sozialwirtschaft  
BIC: BFSWDE33BER  
IBAN: DE4210020500001082600

# PRESS RELEASE



Christo Lufundiso Luanza, Single figures, 2015, MDF-figures, wood, aprox. 30 - 50cm



Melanie Edwards, Sanfte Spiralen in Grau, 2018, mixed media, ink, acrylic, tipp-ex, ballpoint pen

## Trägerverein:

PS-Art e.V. Berlin  
Oranienburger Str. 27  
10117 Berlin

## Vorstand:

Carolin Rosner, Ralph Stabbert,  
Wolfram Voigtländer,  
Alexandra von Gersdorff-Bultmann

## Spendenkonto:

Bank für Sozialwirtschaft  
BIC: BFSWDE33BER  
IBAN: DE4210020500001082600