

# PRESS RELEASE



GALERIE ART CRU BERLIN · ORANIENBURGER STRASSE 27 · 10117 BERLIN-MITTE  
WWW.ART-CRU.DE · FACEBOOK.COM/GALERIEARTCRUBERLIN

030 / 24 35 73 14  
GALERIE@ART-CRU.DE

## NATURALE SYSTEME Haci Sami Yaman, Beatrice Guder

Art from the Open Atelier St. Hedwig

**Vernissage:** Thu. 14.06.2018, 6 pm  
**Exhibition:** 15.06. – 14.07.2018  
**Opening Hours:** Tue–Saturday, 12–6 pm  
**Location:** Galerie ART CRU Berlin, Oranienburger Str. 27, 10117 Berlin-Mitte, Germany  
**Greetings:** Alexander Grafe  
Regional CEO Alexianer St. Hedwig Kliniken Berlin GmbH  
Prof. Dr. med. Felix Bempohl  
Chief Physician Psychiatric University Hospital of the Charité at St. Hedwig-Hospital  
Dr. Martina Klein  
Director Fundraising Alexianer GmbH Münster  
**Introduction:** Paula Schmidt-Dudek  
Artistic Director Open Atelier St. Hedwig  
**Music:** Ensemble NIDO – Julia Gröning, Violine & Guido Scharmer, Violoncello  
Live Music Now Berlin

**Galerie ART CRU Berlin** is exhibiting works by Haci Sami Yaman and Beatrice Guder.

The pictures of **Haci Sami Yaman** are contrasty compositions of dots, strokes, lines and calligraphic elements, seemingly following certain rules that are not immediately comprehensible. They form patterns, structures and streams that are compellingly unique. The drawings are virtually vibrating and appear as though they are charged with different meanings and pulsating energies. At the same time, his pictures are reminiscent of aerial views or sketches by landscape architects. The dynamic configuration of the images is even more impressive when you know that Yaman, who has been working in the Atelier for a almost two years, is almost completely blind. He uses a special kind of acrylic pen for his work. When applying the paint, the artist is able to orient himself by pushing the pens forcefully or by tapping. With the effort he puts into his paintings, Yaman suggests underlying theories of energies, operating modes and other philosophical-technical constructions of thoughts. “He speaks of systems, switches, planets, of complex interactions, of streams and electrification,” explains Paula Schmidt-Dudek, artistic director of the Open Atelier St. Hedwig. “His pictures are connections, pixelations, data processing. He describes levels and areas, programming and amplifiers.”

**Beatrice Guder**’s works are studies of nature and landscapes. Her style of painting shifts between figuration and (presumed) abstraction. Her vibrantly colored motifs include plants, fields, mountains and flowers. Oftentimes they appear as abstract, pattern-like shapes: repetitive, systematic forms which are – if you look at the whole picture – concentrated to landscapes. Some pictures solely consist of sweeping strokes, lines and dots, which – in relation to the other elements – can always be identified with nature. You

---

### Trägerverein:

PS-Art e.V. Berlin  
Oranienburger Str. 27  
10117 Berlin

### Vorstand:

Carolin Rosner, Ralph Stabbert,  
Wolfram Voigtländer,  
Alexandra von Gersdorff-Bultmann

### Spendenkonto:

Bank für Sozialwirtschaft  
BIC: BFSWDE33BER  
IBAN: DE4210020500001082600

# PRESS RELEASE



can find elements of so-called naïve painting; Beatrice Guder expresses beauty, joy and simplicity. After many years, the artist continues to work in the Atelier.

**Galerie ART CRU Berlin** is Berlin's only gallery for so-called Outsider Art since 2008. The term (introduced in 1945 by painter Jean Dubuffet as "Art Brut") refers to art by people with psychiatric disorders or mental disabilities. We are convinced that the particular perceptions these artists have allow them to create art of high authenticity. With our exhibitions we present works by "outsiders" as a crucial part of contemporary art and aim to foster discourse within the established art world. Being located at the Kunsthof on Oranienburger Straße, the gallery presents works by people with disabilities right in the centre of Berlin's art scene. Galerie ART CRU Berlin is backed by the non-profit federation **PS-Art e.V. Berlin** – a network of different institutions.

For its five-year jubilee the gallery published a chronicle comprising all exhibition catalogues from 2008-13. In 2014 we took part at the **Outsider Art Fair** in Paris, the world's leading fair in this field. The same year saw the nomination of five artists from the network of PS-Art e.V. Berlin for the international art prize **euward**. Since 2015 the gallery is a member of the **Ivbg**, the Galleries Association of Berlin (Landesverband Berliner Galerien).

## For further information and images please contact us:

Contact: Alexandra von Gersdorff-Bultmann (gallery director)  
Matthias Hofmann (press)  
Phone: + 49 / (0)30 24 35 73 14 // + 49 / (0)172 3833728  
Mail: [galerie@art-cru.de](mailto:galerie@art-cru.de)  
Web: [www.art-cru.de](http://www.art-cru.de)  
Fb: [facebook.com/GalerieARTCRUBerlin](https://www.facebook.com/GalerieARTCRUBerlin)  
Hours: Tuesday till Saturday / 12 – 6 pm

## For Information about the Open Atelier St. Hedwig please contact:

Paula Schmidt-Dudek:  
Tel.: +49 (0)30 2311-2734 / Mail: [p.schmidt-dudek@alexianer.de](mailto:p.schmidt-dudek@alexianer.de)  
Mechthild Niemann-Mirmehdi:  
Tel.: +49 (0)30 2311-2908/ Mail: [m.niemann-mimehdi@charite.de](mailto:m.niemann-mimehdi@charite.de)  
[www.alexianer.de](http://www.alexianer.de)

---

### Trägerverein:

PS-Art e.V. Berlin  
Oranienburger Str. 27  
10117 Berlin

### Vorstand:

Carolin Rosner, Ralph Stabbert,  
Wolfram Voigtländer,  
Alexandra von Gersdorff-Bultmann

### Spendenkonto:

Bank für Sozialwirtschaft  
BIC: BFSWDE33BER  
IBAN:DE42100205000001082600



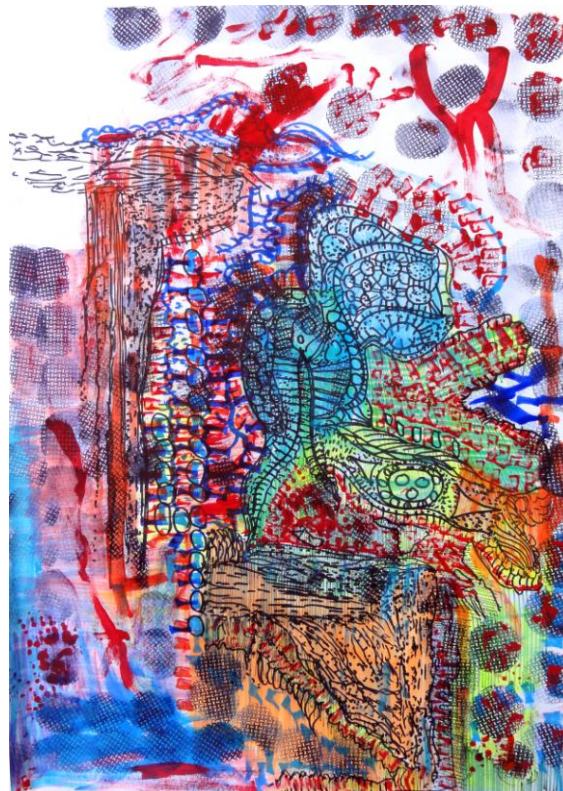
# PRESS RELEASE



For printable image material please contact: [galerie@art-cru.de](mailto:galerie@art-cru.de)



Haci Sami Yaman, Konstante,  
2018, marker on paper, 82x60



Haci Sami Yaman, wild, 2018,  
2018, marker on paper, 60x40



Beatrice Guder, Farbenspiel,  
2018, acrylic on canvas, 24x18



Beatrice Guder, Wald,  
2016, acrylic on canvas, 50x50

## Trägerverein:

PS-Art e.V. Berlin  
Oranienburger Str. 27  
10117 Berlin

## Vorstand:

Carolin Rosner, Ralph Stabbert,  
Wolfram Voigtländer,  
Alexandra von Gersdorff-Bultmann

## Spendenkonto:

Bank für Sozialwirtschaft  
BIC: BFSWDE33BER  
IBAN: DE42100205000001082600