

PRESS RELEASE

GALERIE ART CRU BERLIN · ORANIENBURGER STRASSE 27 · 10117 BERLIN-MITTE



+49 (0)30 / 24 35 73 14
WWW.ART-CRU.DE
GALERIE@ART-CRU.DE

PETER PANKOW and KAROL GOLEBIOWSKI

Vernissage: Thursday, December 06, 2012, 7 pm
Exhibition: December 07, 2012 – February 02, 2013
Galerie ART CRU Berlin, Oranienburger Str. 27, 10117 Berlin, Germany
Introduction: **Andreas Bode**
CEO Nordberliner Werkgemeinschaft gGmbH
Artist Talk between **Peter Pankow** and **Dominik Bender**
on making art and what art does
Theater Thikwa performing "Walk Acts"
Torsten Holzapfel with Berlin songs and hand organ

The artists are present.

Galerie ART CRU Berlin and **Thikwa I Workshop for Theatre and Art** are presenting works by Peter Pankow and Karol Golebiowski. The exhibition shows pictorial works: drawings in large and small formats and sculptures. Both artists have been awarded with the Lothar-Späth-Förderpreis and the European Art Prize/EUCREA Prize.

Peter Pankow (*1968) is an artist and actor, and one of the primary performers of the Theatre Thikwa and associated workshop. His baroque style has an imposing effect at first glance due to the palette and format he employs. Upon closer inspection one recognizes the interaction of figurative elements and exquisitely layered narratives. His works are layered pastels, etched out by needles and re-exposed as associative sediments. They are painstaking notes on the various permutations of his ego: super-ego, under-ego, old-ego and new-ego. It is the same vocabulary invoked on stage in an ongoing exploration of self. An example is his recent autobiographical play, "Protokoll-Pankow" during which he created the large-sized drawings seen in this exhibition.

Karol Golebiowski (*1984 in Szakon, Poland) has been working in the Thikwa-Workshop since 2001. He composes complex vibrant drawings, mostly using pencils and crayons. Out of densely lined webs, he creates a language of imagery with invented signs and amorphous, foetus-like or iconic figures. Less dominantly, the figures emerge but sometimes disappear within his more minimalist series. Within a frame of simple high colour contrast, the works project a large negative space upon which Golebiowski's figures may or may not take form. The uniting element of his compositions is the same careful preconception used by Japanese calligraphists. He never uses an eraser.

In Theatre Thikwa he works particularly as a dancer/performer.

Internet: theater-werkstatt-thikwa.typepad.com / www.thikwa.de

Trägerverein:
PS-Art e.V. Berlin
Oranienburger Straße 27
10117 Berlin-Mitte

Vorstand:
Alexandra von Gersdorff-Bultmann
Silvana Künze
Birgit Angermann

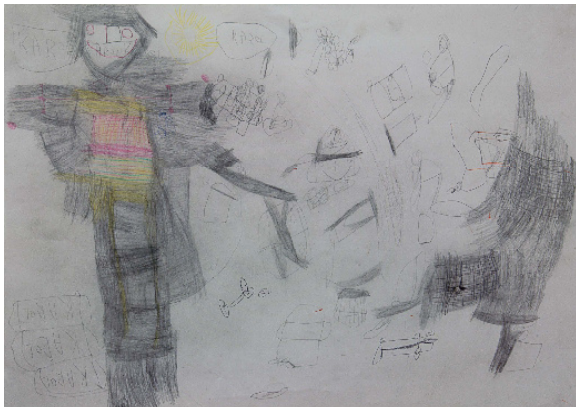
Spendenkonto:
Bank für Sozialwirtschaft
Kontonummer: 108 260 0
BLZ: 100 205 00

PRESS RELEASE

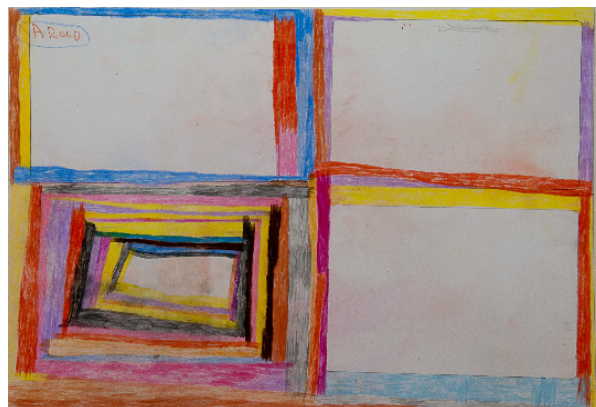
Galerie ART CRU Berlin is Berlin's only gallery for so-called Outsider Art since 2008. The term (introduced in 1945 by painter Jean Dubuffet as "Art Brut") refers to art by people with psychiatric diseases or mental disabilities. The gallery's main focus is to reduce the distance between established art and Outsider Art. Furthermore it aims at interconnecting the artists and their scenes. Being located at the Kunsthof in Oranienburger Straße, the gallery doesn't just present works by people with disabilities right in the centre of the art scene, it also increases their public visibility. Galerie ART CRU Berlin is carried by the non-profit federation PS-Art e.V. Berlin (network of different institutions) lead by Alexandra Gersdorff-Bultmann and her son Nikolaj Bultmann.

For further information and images please contact:

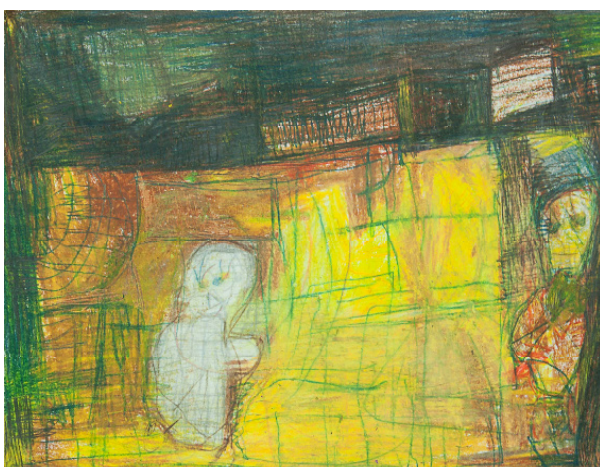
Contact:	Galerie ART CRU Berlin
Phone:	Nikolaj Bultmann (gallery manager)
Web:	+ 49 / (0)30 24 35 73 14 // + 49 / (0)177 645 65 25
Opening hours:	galerie@art-cru.de / www.art-cru.de / www.facebook.com/GalerieARTCRUBerlin
	Tuesday till Saturday / 12 – 6 pm



Karol Golebiowski: untitled, 2009, pencil and coloured pencil, 50x70cm



Karol Golebiowski: untitled, 2012, pencil and coloured pencil, 44x62cm



Peter Pankow: untitled., 2010, wax crayon , 30x42cm



Peter Pankow: Schauspieler 3, 2012, wax crayon, 151x159cm

Trägerverein:
PS-Art e.V. Berlin
Oranienburger Straße 27
10117 Berlin-Mitte

Vorstand:
Alexandra von Gersdorff-Bultmann
Silvana Künze
Birgit Angermann

Spendenkonto:
Bank für Sozialwirtschaft
Kontonummer: 108 260 0
BLZ: 100 205 00