

# PRESS RELEASE



GALERIE ART CRU BERLIN · ORANIENBURGER STRASSE 27 · 10117 BERLIN-MITTE  
WWW.ART-CRU.DE

030 / 24 35 73 14  
GALERIE@ART-CRU.DE

## A DREAM – WHAT ELSE

Art from Offenes Atelier St. Hedwig, Berlin and Project Ability, Glasgow

**Vernissage:** Thu. 01.08.2019, 6 pm  
**Exhibition:** 02.08. – 31.08.2019  
**Opening Hours:** Tue–Saturday, 12–6 pm  
**Location:** Galerie ART CRU Berlin, Oranienburger Str. 27, 10117 Berlin-Mitte, Germany  
**Greetings:** Prof. Dr. med. Felix BERPohl  
Chief Physician Psychiatric University Hospital of the Charité at St. Hedwig-Hospital  
Prof. Doris Titze  
Direction for program KunstTherapie  
Dresden Academy of Fine Arts | „Traum und Bild“

**Introduction:** Jim Ewans  
Project Ability, Glasgow  
Paula Schmidt-Dudek  
Artistic Director Open Atelier St. Hedwig

**Music:** Niko Zeidler, Saxophone  
Live Music Now – Yehudi Menuhin Berlin e.V.

**Gallery ART CRU Berlin** presents paintings from the intercultural exhibition project between **Offenes Atelier St. Hedwig**, Berlin and **Project Ability**, Glasgow. What is dream - what is reality? At what point do both levels blend into each other? In art, dreams and realities can merge together.

After an exhibition of artworks from Offenes Atelier St. Hedwig in the gallery rooms of Project Ability in Glasgow in the summer of 2018, the St. Hedwig Hospital invites the Scottish colleagues to a joint exhibition "A DREAM - WHAT ELSE" in Berlin. All involved artists are addressing this topic. "Dreams can sometimes lead us to the truth, but can also turn out to be deceptive. They can help us forget reality but also seduce us to ignore it. Are dreams more beautiful or cruel than reality and reality more truthful than a dream? Those are the questions we are asking in this exhibition" explains Paula Schmidt-Dudek, director of Offenes Ateliers St. Hedwig..

A total of 12 artists can be seen in the show. Glasgow's list of participants begins with **Richard Anderson**, who works with geometrical natural forms using etching technique. **Grant Glennie** shows digital prints: black snowballs made out of fabric slightly falling apart. **Simon Mcauly** is present with blurry and resolving landscape photography, alongside **Angela Mclauchlin's** dreams of fiber pens reminiscent of classic Art Brut and the horizontal and vertical tiled snowfalls of **Alan Straiton**.

From Berlin you will see the surrealistic pictures of **R. Fecit**, who lets a train drive through the sea, while **Dirk Kühnel**, among other things, depicts the dreamer himself. **Robert Latka** presents generously painted female figures, as if from another world. **Yoshe Malkus'**

---

### Trägerverein:

PS-Art e.V. Berlin  
Oranienburger Str. 27  
10117 Berlin

### Vorstand:

Carolin Rosner, Ralph Stabbert,  
Wolfram Voigtländer,  
Alexandra von Gersdorff-Bultmann

### Spendenkonto:

Bank für Sozialwirtschaft  
BIC: BFSWDE33BER  
IBAN:DE42100205000001082600

# PRESS RELEASE



works provide expressive and technically variable insights into the artist's perception, which seems to allow us to share his nightmares. The pencil drawings by **Violetta Volk**, populated with dancing faun-like figures, carry us into a midsummer night's dream with a hypnotic effect. **Nina Valeska Witzel** presents works in which she composes personalities from different periods on top of each other, as if drawn with a rainbow pen. The group from Offenes Atelier is completed with **Belhe Zaimoglu**, who effectively transfers her enigmatic figures to the interior of the body against a monochrome background - in picturesque day and night dreams.

- - -

**Galerie ART CRU Berlin** is Berlin's only gallery for so-called Outsider Art since 2008. The term (introduced in 1945 by painter Jean Dubuffet as "Art Brut") refers to art by people with psychiatric disorders or mental disabilities. We are convinced that the particular perceptions these artists have allow them to create art of high authenticity. With our exhibitions we present works by "outsiders" as a crucial part of contemporary art and aim to foster discourse within the established art world. Being located at the Kunsthof on Oranienburger Straße, the gallery presents works by people with disabilities right in the centre of Berlin's art scene. Galerie ART CRU Berlin is backed by the non-profit federation **PS-Art e.V. Berlin** – a network of different institutions.

For its five-year jubilee the gallery published a chronicle comprising all exhibition catalogues from 2008-13. In 2014 we took part at the **Outsider Art Fair** in Paris, the world's leading fair in this field. The same year saw the nomination of five artists from the network of PS-Art e.V. Berlin for the international art prize **euward**. Since 2015 the gallery is a member of the **Ivbg**, the Galleries Association of Berlin (Landesverband Berliner Galerien).

- - -

## For further information and images please contact us:

Contact: Alexandra von Gersdorff-Bultmann (gallery director)  
Matthias Hofmann (press)  
Phone: + 49 / (0)30 24 35 73 14 // + 49 / (0)172 3833728  
Mail: [galerie@art-cru.de](mailto:galerie@art-cru.de)  
Web: [www.art-cru.de](http://www.art-cru.de)  
Fb: [facebook.com/GalerieARTCRUBerlin](https://www.facebook.com/GalerieARTCRUBerlin)  
Hours: Tuesday till Saturday / 12 – 6 pm

## For Information about the Open Atelier St. Hedwig please contact:

Paula Schmidt-Dudek:  
Tel.: +49 (0)30 2311-2734 / Mail: [p.schmidt-dudek@alexianer.de](mailto:p.schmidt-dudek@alexianer.de)  
Mechthild Niemann-Mirmehdi:  
Tel.: +49 (0)30 2311-2908/ Mail: [m.niemann-mimehdi@charite.de](mailto:m.niemann-mimehdi@charite.de)  
[www.alexianer.de](http://www.alexianer.de)

---

### Trägerverein:

PS-Art e.V. Berlin  
Oranienburger Str. 27  
10117 Berlin

### Vorstand:

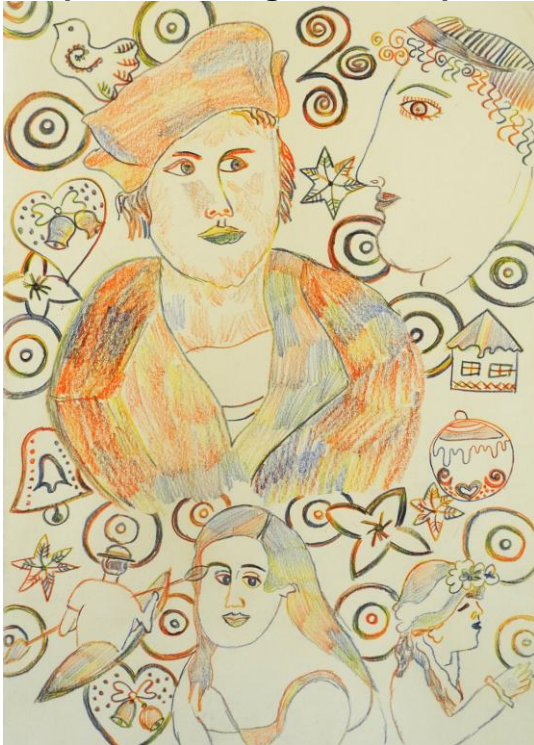
Carolin Rosner, Ralph Stabbert,  
Wolfram Voigtländer,  
Alexandra von Gersdorff-Bultmann

### Spendenkonto:

Bank für Sozialwirtschaft  
BIC: BFSWDE33BER  
IBAN:DE4210020500001082600

# PRESS RELEASE

For printable image material please contact: [galerie@art-cru.de](mailto:galerie@art-cru.de)



Valeska Witzel, Wandel und Zeiten II, 2018  
coloured pencil on Paper, 30x40



Belhe Zaimoglu, Träumer, 2018  
mixed media on paper, 70x100



Alan Straiton, Horizontal Snow, 2018  
acrylic on paper, 30x30



Angela McLauchlin, untitled, 2017  
felt pen on paper, 30x23

## Trägerverein:

PS-Art e.V. Berlin  
Oranienburger Str. 27  
10117 Berlin

## Vorstand:

Carolin Rosner, Ralph Stabbert,  
Wolfram Voigtländer,  
Alexandra von Gersdorff-Bultmann

## Spendenkonto:

Bank für Sozialwirtschaft  
BIC: BFSWDE33BER  
IBAN: DE4210020500001082600