

PRESS RELEASE



GALERIE ART CRU BERLIN · ORANIENBURGER STRASSE 27 · 10117 BERLIN-MITTE
WWW.ART-CRU.DE

030 / 24 35 73 14
GALERIE@ART-CRU.DE

CHAOS UND ORDNUNG

Art from Offenes Atelier St. Hedwig

Vernissage: Thu. 10.09.2020, 6 pm
Exhibition: 11.09. – 22.10.2020
Opening Hours: Tue & Thu 12–6 pm, Wed 2–6 pm
Location: Galerie ART CRU Berlin, Oranienburger Str. 27, 10117 Berlin-Mitte, Germany
Greetings: Alexander Grafe
Regional Managing Director St. Hedwig-Kliniken Berlin
PD Dr. Christiane Montag & Mechthild Niemann-Mirmehdi
Leading Senior Physician & Head of Therapeutic Services
PUK Charité im St. Hedwig-Krankenhaus

Introduction: Paula Schmidt-Dudek
Artistic Director Offenes Atelier St. Hedwig
Michael Behrens
On behalf of the artists

Music: Duo AUSMA
Theduardo Prasetyo (Gitarre) & Vizma Zvaigzne (Sopran)
Live Music Now – Yehudi Menuhin Berlin e.V.

Galerie ART CRU Berlin shows pictures of 13 artists from Offenes Atelier St. Hedwig, dealing with the theme chaos and order.

The dichotomy plays an important role in the world of art and in the creation of artworks. Elements from both sides can become significant in the artistic process. As principles of "order," one could mention for example the "meticulous" adherence to color compositional rules, the orientation towards artistic traditions, or a strict discipline in the application of certain techniques. Examples of elements of "chaos" might be the anarchic negation of any guidelines, the break with everything that was before, or the decision to work exclusively with new media and experimental forms of expression. The field of tension between chaos and order, which every artist has to deal with in the development of their work, offers an almost inexhaustible space for creativity.

In the exhibition, various artistic positions are presented that make this confrontation tangible for the viewer. Martin Nieder, for example, creates pictures that radiate a cool order, but behind which a great secret or an unpredictable riddle always seem to be hidden. Gabriele Graul worked with great joy of experimentation and spontaneity on abstract compositions whose atmospheric color effects sometimes recall Impressionism and sometimes Action Painting. The technically versatile Guthrie McDonald is represented with a small selection of overpaintings. In the work "get lucky 1", the figure found on a magazine sheet was painted over with an extensive application of color to the head and body. The result is that when we look at it, normative principles of order with which we would normally immediately and unconsciously classify the figure under consideration suddenly appear to us to be unsuitable for our assessment of what we have seen. Or is the stiletto of a high heel still shining out somewhere down there? In her work "Corona" Belhe Zaimoglus deals with possible effects of the omnipresent virus on humans and animals in an enigmatic overall composition, which is characterized by a transparent conciseness in the use of color and her own intrepid and expressively chosen form.

Trägerverein:
PS art e.V. Berlin
Oranienburger Str. 27
10117 Berlin

Vorstand:
Carolyn Rosner, Ralph Stabbert,
Wolfram Voigtländer,
Alexandra von Gersdorff-Bultmann

Spendenkonto:
Bank für Sozialwirtschaft
BIC: BFSWDE33BER
IBAN:DE42100205000001082600

PRESS RELEASE



Galerie ART CRU Berlin is Berlin's only gallery for so-called Outsider Art since 2008. The term (introduced in 1945 by painter Jean Dubuffet as "Art Brut") refers to art by people with psychiatric disorders or mental disabilities. We are convinced that the particular perceptions these artists have allow them to create art of high authenticity. With our exhibitions we present works by "outsiders" as a crucial part of contemporary art and aim to foster discourse within the established art world. Being located at the Kunsthof on Oranienburger Straße, the gallery presents works by people with disabilities right in the centre of Berlin's art scene. Galerie ART CRU Berlin is backed by the non-profit federation **PS-Art e.V. Berlin** – a network of different institutions.

For its five-year jubilee the gallery published a chronicle comprising all exhibition catalogues from 2008-13. In 2014 we took part at the **Outsider Art Fair** in Paris, the world's leading fair in this field. The same year saw the nomination of five artists from the network of PS-Art e.V. Berlin for the international art prize **euward**. Since 2015 the gallery is a member of the **lvbg**, the Galleries Association of Berlin (Landesverband Berliner Galerien).

- - -

For further information and images please contact us:

Contact: Alexandra von Gersdorff-Bultmann (gallery director)
Matthias Hofmann (press)
Phone: + 49 / (0)30 24 35 73 14
Mail: galerie@art-cru.de
Web: www.art-cru.de
Instagram: @artcruberlin
Hours: Tuesdays and Thursdays 12 – 6 pm, Wednesdays 2 -6 pm



For Information about the Offenes Atelier St. Hedwig please contact:

Paula Schmidt-Dudek (from 01.10.2020: Elisa Canducci and Maren Rabe):
Tel.: +49 (0)30 2311-2734 / Mail: p.schmidt-dudek@alexianer.de
Mechthild Niemann-Mirmehdi:
Tel.: +49 (0)30 2311-2908/ Mail: m.niemann-mimehdi@charite.de
www.alexianer.de

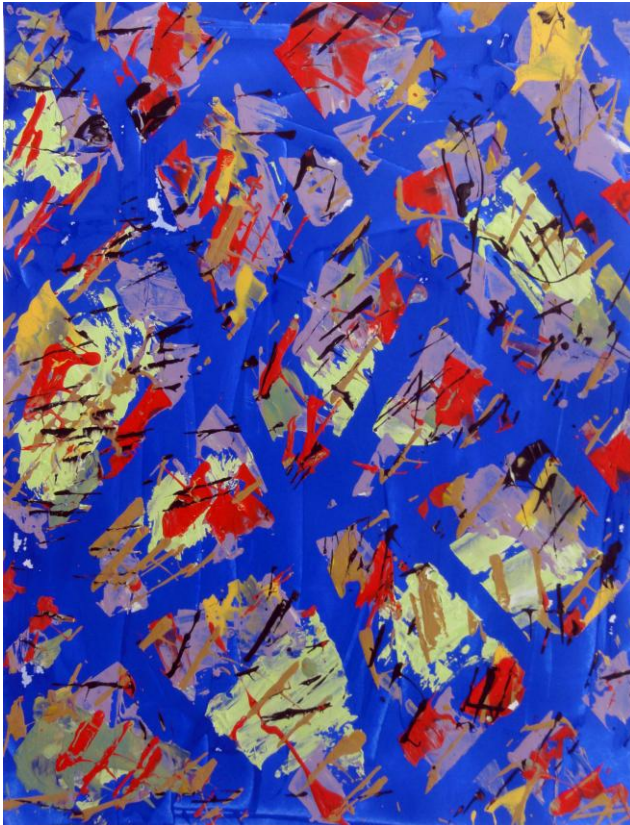
Trägerverein:
PS art e.V. Berlin
Oranienburger Str. 27
10117 Berlin

Vorstand:
Carolin Rosner, Ralph Stabbert,
Wolfram Voigtländer,
Alexandra von Gersdorff-Bultmann

Spendenkonto:
Bank für Sozialwirtschaft
BIC: BFSWDE33BER
IBAN:DE42100205000001082600

PRESS RELEASE

For printable image material please contact: galerie@art-cru.de



Gabriele Graul, Chaos und Ordnung, 2020
acrylic, 70x50



Belhe Zaimoglu, Corona, 2020
mixed media, 260x124



Martin Nieder, Vergossenes Licht, 2018
acrylic on canvas, 60x70



Guthrie McDonald, get lucky 1, 2020
overpainting, 40x30

Trägerverein:
PS art e.V. Berlin
Oranienburger Str. 27
10117 Berlin

Vorstand:
Carolin Rosner, Ralph Stabbert,
Wolfram Voigtländer,
Alexandra von Gersdorff-Bultmann

Spendenkonto:
Bank für Sozialwirtschaft
BIC: BFSWDE33BER
IBAN: DE42100205000001082600