

PRESS RELEASE

GALERIE ART CRU BERLIN · ORANIENBURGER STRASSE 27 · 10117 BERLIN-MITTE
0049 (0)30 / 24 35 73 14 · GALERIE@ART-CRU.DE · WWW.ART-CRU.DE



HEIDI BRUCK

Duration: 31.03.–01.05.2021
Finissage: 29.04.2022, 4-9 pm
Gallery Weekend: 30.04. & 01.05.2022, noon-6 pm
Opening hours: Tu & Th noon-6 pm, We 2-6 pm and by appointment
Venue: Galerie ART CRU Berlin, Oranienburger Str. 27, 10117 Berlin-Mitte

Galerie ART CRU Berlin is showing drawings by **Heidi Bruck** (*1971 in Berlin), who works at the Thikwa Werkstatt für Theater und Kunst in Kreuzberg.

In light of recent events taking place in Ukraine, the gallery displayed solidarity by painting all its walls black in a symbolic action on the 27.02.2022. The war has immensely impacted us. Proceeding on without making a statement seemed unfathomable. The black gallery walls will serve as the background to Bruck's works. For the occasion of the exhibition, we will donate to these two organizations: **ARTISTS at RISK** (AR) and **Doctors Without Borders / Médecins Sans Frontières** (MSF).

ARTISTS at RISK (AR) is a non-profit organization at the intersection of human rights and the arts. Since 2013 AR has been collaborating with arts non-profits and government funders to assist artists who are at risk politically and fleeing oppression and war globally. MSF provides emergency medical aid worldwide in crisis and war zones and after natural disasters. The international organization helps quickly, efficiently and unbureaucratically - without asking about the origin, religion or political conviction of the people affected. Further information and direct ways to donate at: artistsatrisk.org and aerzte-ohne-grenzen.de.

About 15 years ago, **Heidi Bruck** began to explore shapes such as circles or triangles in drawings. The artist, who wears only red clothes and has rarely spoken in words since childhood, developed a fascinating visual language as an important medium of communication. The drawings are her notes, she once said. From a multitude of strokes, she creates large, abstract forms that either stand alone or are arranged in pairings. The work appears monumental and simultaneously playful; a lively, sprawling cosmos that contrasts with the artist's tranquility.

If one looks at important artistic stations in her vita, it is noticeable that she, in addition to a presentation at the Outsider Art Fair Paris (2014) and a nomination for the euward, the European Art Award for Painting and Graphic Arts in the Context of Mental Disability (2015), has repeatedly attracted attention beyond the field of "outsider art". In 2015, for example, she was nominated for the Losito Art Prize (prize for painting / drawing and graphics). At Galerie ART CRU Berlin, the graphic work of Heidi Bruck is now presented in a comprehensive solo exhibition after many years of collaboration with numerous fair presentations and group exhibitions.

Trägerverein:
PS art e.V. Berlin
Oranienburger Straße 27
10117 Berlin-Mitte

Vorstand:
Maren Rabe, Elisa Canducci
Dannica Litzen
Benedikt Ey

Spendenkonto:
Bank für Sozialwirtschaft
IBAN: DE42100205000001082600
BIC: BFSWDE33BER

PRESS RELEASE

GALERIE ART CRU BERLIN · ORANIENBURGER STRASSE 27 · 10117 BERLIN-MITTE
0049 (0)30 / 24 35 73 14 · GALERIE@ART-CRU.DE · WWW.ART-CRU.DE



About Thikwa: Started in 1995 as a pilot project, the Theater-Werkstatt Thikwa, with its focus on diverse artistic professionalization, was recognized as a workshop for people with disabilities in 1998. The workshop's practice and work areas, which are interrelated in terms of content, are: Acting and Dance, Painting and Sculpture, Handicrafts and Graphic Arts. The workshop is a branch workshop of the Nordberliner Werkgemeinschaft (nbw) and cooperation with the Theater Thikwa e.V. Today it has 43 employees.

Galerie ART CRU Berlin is Berlin's only gallery for so-called Outsider Art since 2008. The term (introduced in 1945 by painter Jean Dubuffet as "Art Brut") refers to art by people with psychiatric disorders or mental disabilities. The gallery team is convinced that the particular perceptions these artists have allow them to create art of high authenticity. The exhibitions present works by "outsiders" as an important position in contemporary art. The aim is to stimulate an active discourse with the established art world. Located in the Kunsthof on Oranienburger Straße, the gallery positions works by outsider artists in the middle of the Berlin art scene.

Galerie ART CRU Berlin is backed by the association PS art e.V. Berlin, a network of various psychosocial institutions.

- - -

Contact:

Galerie ART CRU Berlin
Oranienburger Str. 27, Im Kunsthof, 10117 Berlin, Germany

Maren Rabe (1. chairwoman PS art e. V. Berlin)
Ivan Nenchev
Matthias Hofmann (press)

Phone: + 49 / (0)30 24 35 73 14

Mail: galerie@art-cru.de

Web: www.art-cru.de

Instagram: @artcruberlin

Hours: Tuesdays and Thursdays 12-6 pm, Wednesdays 2-6 pm and by appointment



Trägerverein:
PS art e.V. Berlin
Oranienburger Straße 27
10117 Berlin-Mitte

Vorstand:
Maren Rabe, Elisa Canducci
Dannica Litzen
Benedikt Ey

Spendenkonto:
Bank für Sozialwirtschaft
IBAN: DE42100205000001082600
BIC: BFSWDE33BER

PRESS RELEASE

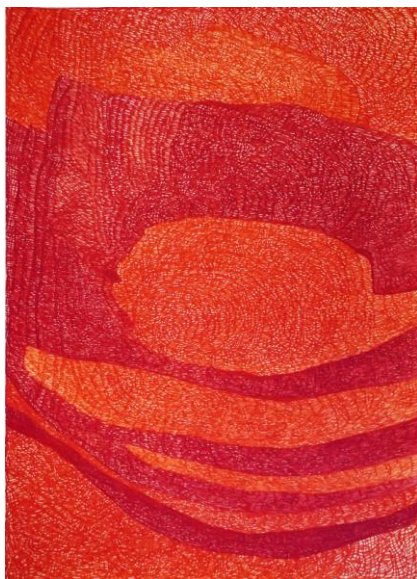
GALERIE ART CRU BERLIN · ORANIENBURGER STRASSE 27 · 10117 BERLIN-MITTE
0049 (0)30 / 24 35 73 14 · GALERIE@ART-CRU.DE · WWW.ART-CRU.DE



For printable image material please contact: galerie@art-cru.de



Heidi Bruck, untitled, 2015, pencil, 70x100



Heidi Bruck, Die Rote Zora, 2020, fiber pen, 70x50



Heidi Bruck, untitled, 2014, colored pencil, 70x100

Trägerverein:
PS art e.V. Berlin
Oranienburger Straße 27
10117 Berlin-Mitte

Vorstand:
Maren Rabe, Elisa Canducci
Dannica Litzen
Benedikt Ey

Spendenkonto:
Bank für Sozialwirtschaft
IBAN: DE42100205000001082600
BIC: BFSWDE33BER

PRESS RELEASE

GALERIE ART CRU BERLIN · ORANIENBURGER STRASSE 27 · 10117 BERLIN-MITTE
0049 (0)30 / 24 35 73 14 · GALERIE@ART-CRU.DE · WWW.ART-CRU.DE



Heidi Bruck, untitled, 2015, colored pencil, 70x100



Heidi Bruck, untitled, 2021, colored pencil, 70x100

All images: © Galerie ART CRU Berlin / Thikwa Werkstatt für Theater und Kunst

Trägerverein:
PS art e.V. Berlin
Oranienburger Straße 27
10117 Berlin-Mitte

Vorstand:
Maren Rabe, Elisa Canducci
Dannica Litzen
Benedikt Ey

Spendenkonto:
Bank für Sozialwirtschaft
IBAN: DE42100205000001082600
BIC: BFSWDE33BER