

PRESS RELEASE



GALERIE ART CRU BERLIN · ORANIENBURGER STRASSE 27 · 10117 BERLIN-MITTE
WWW.ART-CRU.DE

030 / 24 35 73 14
GALERIE@ART-CRU.DE

MARIA CONCETTA CASSARÀ

Vernissage: Thursday, 19.09.2019, 7 pm
Exhibition: 20.09. – 26.10.2019
Opening Hours: Tue–Fri, 12–6 pm, Sat 2 -6 pm
Location: Galerie ART CRU Berlin, Oranienburger Str. 27, 10117 Berlin-Mitte, Germany
Introduction: Sara Ugolini
Art historian, Bologna
“How Maria Concetta Cassarà was discovered”
Greetings: Dr. Wolfram Voigtländer
Board Member, Galerie ART CRU Berlin

Galerie ART CRU Berlin is showing pictures by self-taught artist Maria Concetta Cassarà (born 1932, Mirto, Sicily), who died in 2018 in Bologna.

Cassarà came to painting late in life. After living as a housewife, she worked as a confectioner and tailor. When she was over 60 years old, she spontaneously began painting while looking after her granddaughter. Ever since, she had been working on her paintings until her passing, every day until late at night.

Thematically, her works are deeply rooted in the traditions of Sicilian religiosity and folklore with Madonnas, saints and a colorful world of animals and plants, but she imaginatively expanded this cosmos with elements of contemporary life in the Po Valley. The artist combined various elements from popular and rural everyday culture with religious or fantastical motifs. We find female figures in evening wear with selected accessories, who pose frontally with the typical greeting gesture of television announcers at the beginning of a show. According to Sara Ugolini, art historian, Cassarà was inspired by the TV program, which she always kept running in the background as she was painting. Male persons, on the other hand, correspond well with the rural topography depicted in the pictures: hills and valleys, plants, flowers and rivers form a colourful, wild, lush, enchanted natural environment into which Cassarà also places groups of buildings. Many of the masculine figures seem to be shepherds, wandering beings with long, shaggy hair and beards. These figures, wrapped in hides, accompanied by lambs or goats, are reminiscent of hermits and of John the Baptist. Some of her characters blur the boundaries between common gender roles, such as monks with bright red fingernails or bearded women. Cassara stages her pictures like religious objects that the viewer can marvel at.

Trägerverein:
PS-Art e.V. Berlin
Oranienburger Straße 27
10117 Berlin-Mitte

Vorstand:
Carolin Rosner, Ralph Stabbert
Wolfram Voigtländer
Alexandra von Gersdorff-Bultmann

Spendenkonto:
Bank für Sozialwirtschaft
IBAN: DE4210020500001082600
BIC: BFSWDE33BER

PRESS RELEASE



Galerie ART CRU Berlin is Berlin's only gallery for so-called Outsider Art since 2008. The term (introduced in 1945 by painter Jean Dubuffet as "Art Brut") refers to art by people with psychiatric disorders or mental disabilities. We are convinced that the particular perceptions these artists have allow them to create art of high authenticity. With our exhibitions we present works by "outsiders" as a crucial part of contemporary art and aim to foster discourse within the established art world. Being located at the Kunsthof on Oranienburger Straße, the gallery presents works by people with disabilities right in the centre of Berlin's art scene. Galerie ART CRU Berlin is backed by the non-profit federation **PS-Art e.V. Berlin** – a network of different institutions.

For its five-year jubilee the gallery published a chronicle comprising all exhibition catalogues from 2008-13. In 2014 we took part at the **Outsider Art Fair** in Paris, the world's leading fair in this field. The same year saw the nomination of five artists from the network of PS-Art e.V. Berlin for the international art prize **euward**. Since 2015 the gallery is a member of the **lvbg**, the Galleries Association of Berlin (Landesverband Berliner Galerien).

For further information and images please contact us:

Contact: Alexandra von Gersdorff-Bultmann (gallery director)
Matthias Hofmann (press)
Phone: + 49 / (0)30 24 35 73 14 // + 49 / (0)172 3833728
Mail: galerie@art-cru.de
Web: www.art-cru.de
Hours: Tuesday – Friday from 12 – 6 pm
Saturdays from 2 – 6 pm



Trägerverein:
PS-Art e.V. Berlin
Oranienburger Straße 27
10117 Berlin-Mitte

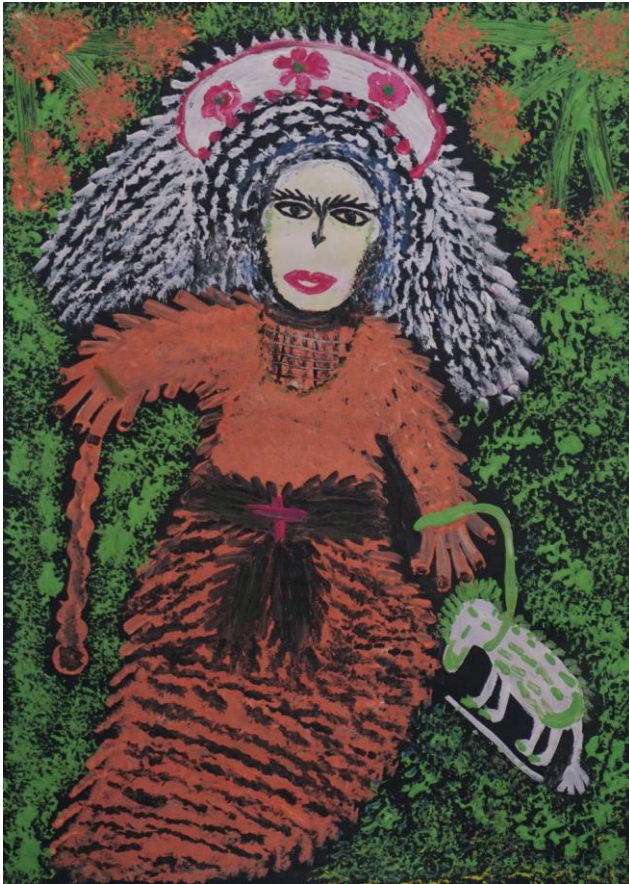
Vorstand:
Carolin Rosner, Ralph Stabbert
Wolfram Voigtländer
Alexandra von Gersdorff-Bultmann

Spendenkonto:
Bank für Sozialwirtschaft
IBAN: DE42100205000001082600
BIC: BFSWDE33BER

PRESS RELEASE



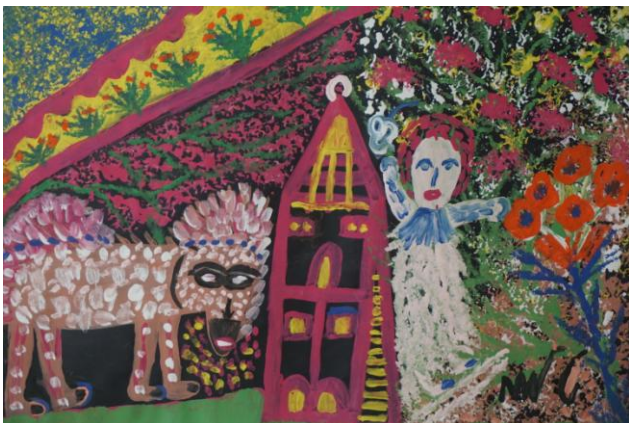
For printable image material please contact: galerie@art-cru.de



untitled, undated
tempera colours, 70x50



untitled, undated
tempera colours, 50x35



untitled, undated
tempera colours, 50x70



untitled, undated
tempera colours, 50x70

Trägerverein:
PS-Art e.V. Berlin
Oranienburger Straße 27
10117 Berlin-Mitte

Vorstand:
Carolin Rosner, Ralph Stabbert
Wolfram Voigtländer
Alexandra von Gersdorff-Bultmann

Spendenkonto:
Bank für Sozialwirtschaft
IBAN: DE42100205000001082600
BIC: BFSWDE33BER