

# PRESS RELEASE

GALERIE ART CRU BERLIN · ORANIENBURGER STRASSE 27 · 10117 BERLIN-MITTE  
0049 (0)30 / 24 35 73 14 · GALERIE@ART-CRU.DE · WWW.ART-CRU.DE



## WIKTOR GORAZDOWSKI HYPERDETAILISMUS

**Duration:** 21.11.2024–27.02.2025  
**Vernissage:** Th 21.11.2024, 6 pm,  
the artist will be present  
**Greetings:** Ivan Nenchev, 1st board member PS-Art e.V. Berlin and curator  
**Opening hours:** Tu & Th noon-6 pm, We & Fr 2-6 pm and by appointment  
**Venue:** Galerie ART CRU Berlin, Oranienburger Str. 27, 10117 Berlin-Mitte

**Galerie ART CRU Berlin** presents the first solo exhibition of the visionary artist **Wiktor Gorazdowski** in Germany. On display are 20 works by the Warsaw-based artist, who creates unique, socio-critical scenarios in his drawings and illustrations.

Gorazdowski describes his art as the expression of a divine mission: a creative, almost missionary calling that goes far beyond the boundaries of conventional categories. Art critics often find it difficult to classify his work: "It's too good to be considered unprofessional and too extraordinary to meet the criteria of realism," comments the artist with a twinkle in his eye.

Wiktor Gorazdowski, born in Warsaw in 1979, combines influences from architecture, culture, and technology with a deep spiritual-mystical mission in his work. He describes his style as hyperdetailism: "The situations and constructions depicted are functional and useful despite their oddities, as they serve rational processes," explains Gorazdowski. His works, meticulously applied to cardboard with pencil, ink, and felt-tip pen, sometimes resemble detailed plans of everyday human life. Each one has a life of its own in Gorazdowski's detailed pictorial worlds.

His artistic work is inspired by his encounter with the work of Tadeusz Głowala, whose reduced stylistic language Gorazdowski refers to in his own work. In his pictures, he often portrays spiritually suggestive figures in everyday interpersonal situations. These are told from a perspective that oscillates between attentive closeness and critical distance, are precisely observed and appear to be from another time. In this way, real and imaginary landscapes are created in which religious symbols are combined with gender issues, precise observations from fashion and pop culture, and a unique image of society.

Gorazdowski's works have been successfully shown at international exhibitions and fairs and are part of extensive collections in France, Switzerland and Germany. In Berlin, they are now being shown in this depth for the first time.

The exhibition is curated by Ivan Nenchev.

---

**Trägerverein:**  
PS-Art e.V. Berlin  
Oranienburger Straße 27  
10117 Berlin-Mitte

**Vorstand:**  
Dr. Ivan Nenchev, Norbert Prochnow  
Maren Rabe, Andrea Siebert  
Renate Lühr

**Spendenkonto:**  
Bank für Sozialwirtschaft  
IBAN: DE46370205000001082600  
BIC: BFSWDE33XXX

# PRESS RELEASE

GALERIE ART CRU BERLIN · ORANIENBURGER STRASSE 27 · 10117 BERLIN-MITTE  
0049 (0)30 / 24 35 73 14 · GALERIE@ART-CRU.DE · WWW.ART-CRU.DE



**Galerie ART CRU Berlin** is Berlin's only gallery for so-called Outsider Art since 2008. The term (introduced in 1945 by painter Jean Dubuffet as "Art Brut") refers to art by people with psychiatric disorders or mental disabilities. The gallery team is convinced that the particular perceptions these artists have allow them to create art of high authenticity. The exhibitions present works by "outsiders" as an important position in contemporary art. The aim is to stimulate an active discourse with the established art world. Located in the Kunsthof on Oranienburger Straße, the gallery positions works by outsider artists in the middle of the Berlin art scene.

Galerie ART CRU Berlin is backed by the association PS-Art e.V. Berlin, a network of various psychosocial institutions. In 2022, the gallery was awarded the Ulrike-Fritze-Lindenthal Prize for its inclusive work, the destigmatization award of the German Association for Psychiatry, Psychotherapy and Psychosomatics (DGPPN).

- - -

## Contact:

Galerie ART CRU Berlin, Oranienburger Str. 27, Im Kunsthof, 10117 Berlin, Germany

Marie Jeschke (gallery director)  
Maren Rabe und Ivan Nenchev (curators)  
Matthias Hofmann (press)

Phone: + 49 / (0)30 24 35 73 14  
Mail: [galerie@art-cru.de](mailto:galerie@art-cru.de)  
Web: [www.art-cru.de](http://www.art-cru.de)  
Instagram: [@artcruberlin](https://www.instagram.com/artcruberlin)  
Hours: Tuesdays and Thursdays, 12-6 pm,  
Wednesdays and Fridays, 2-6 pm and by appointment



---

**Trägerverein:**  
PS-Art e.V. Berlin  
Oranienburger Straße 27  
10117 Berlin-Mitte

**Vorstand:**  
Dr. Ivan Nenchev, Norbert Prochnow  
Maren Rabe, Andrea Siebert  
Renate Lühr

**Spendenkonto:**  
Bank für Sozialwirtschaft  
IBAN: DE46370205000001082600  
BIC: BFSWDE33XXX

# PRESS RELEASE

GALERIE ART CRU BERLIN · ORANIENBURGER STRASSE 27 · 10117 BERLIN-MITTE  
0049 (0)30 / 24 35 73 14 · GALERIE@ART-CRU.DE · WWW.ART-CRU.DE



For printable image material please contact: [galerie@art-cru.de](mailto:galerie@art-cru.de)



Wiktor Gorazdowski, Taking the long journey though my imagination, 2022, fineliner, marker, 30x42



Wiktor Gorazdowski, The woman on the border between reality and dream, 2023, fineliner, marker, 42x30

**Trägerverein:**  
PS-Art e.V. Berlin  
Oranienburger Straße 27  
10117 Berlin-Mitte

**Vorstand:**  
Dr. Ivan Nenchev, Norbert Prochnow  
Maren Rabe, Andrea Siebert  
Renate Lühr

**Spendenkonto:**  
Bank für Sozialwirtschaft  
IBAN: DE4637020500001082600  
BIC: BFSWDE33XXX

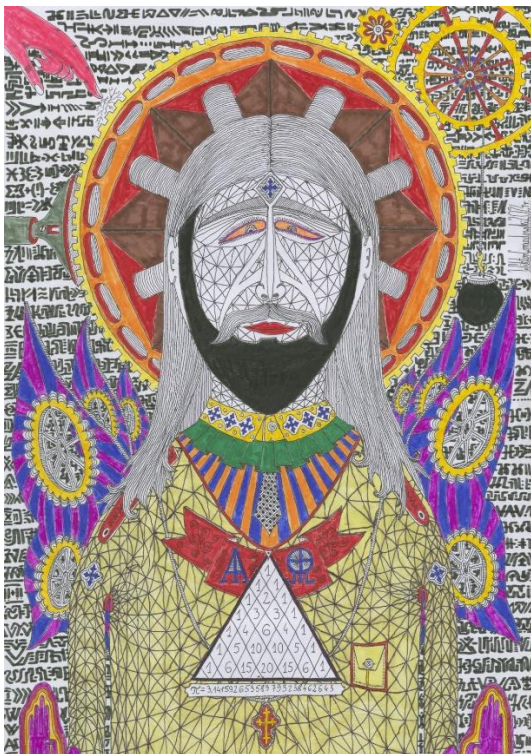
# PRESS RELEASE

GALERIE ART CRU BERLIN · ORANIENBURGER STRASSE 27 · 10117 BERLIN-MITTE  
0049 (0)30 / 24 35 73 14 · GALERIE@ART-CRU.DE · WWW.ART-CRU.DE



l: Wiktor Gorazdowski, Automatical haircutting systems, 2020, fineliner, marker, 42x30

r: I do not want, but I have to connect pluses and minuses, 2021, fineliner, marker, 42x30



Wiktor Gorazdowski, Good thoughts programmer, 2020, Fineliner, Fasermarker, 42x30

**Trägerverein:**  
PS-Art e.V. Berlin  
Oranienburger Straße 27  
10117 Berlin-Mitte

**Vorstand:**  
Dr. Ivan Nenchev, Norbert Prochnow  
Maren Rabe, Andrea Siebert  
Renate Lühr

**Spendenkonto:**  
Bank für Sozialwirtschaft  
IBAN: DE46370205000001082600  
BIC: BFSWDE33XXX

# PRESS RELEASE

GALERIE ART CRU BERLIN · ORANIENBURGER STRASSE 27 · 10117 BERLIN-MITTE  
0049 (0)30 / 24 35 73 14 · GALERIE@ART-CRU.DE · WWW.ART-CRU.DE



Wiktor Gorazdowski, Magic pencil vertical, 2020, Fineliner, Fasermaler, 42x30



Wiktor Gorazdowski, The knock of tapemachine, heart beat, 2022, Fineliner, Fasermaler, 30x42

All pictures © Wiktor Gorazdowski, Galerie ART CRU Berlin

**Trägerverein:**  
PS-Art e.V. Berlin  
Oranienburger Straße 27  
10117 Berlin-Mitte

**Vorstand:**  
Dr. Ivan Nenchev, Norbert Prochnow  
Maren Rabe, Andrea Siebert  
Renate Lühr

**Spendenkonto:**  
Bank für Sozialwirtschaft  
IBAN: DE46370205000001082600  
BIC: BFSWDE33XXX